



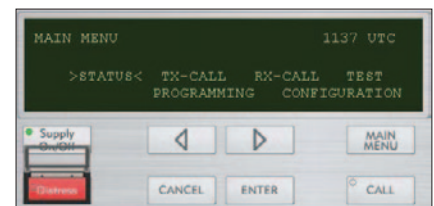
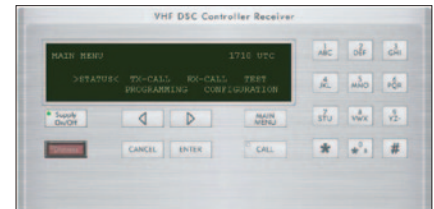
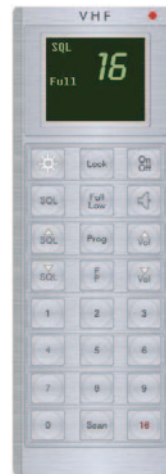
GMDSS TRAINER

ABOUT NAUTIS

NAUTIS provides a range of advanced, affordable and effective maritime simulators, fulfilling the training needs of nautical colleges, naval academies, maritime institutes and ship owners.

NAUTIS simulators have been designed on the following principles:

- Efficient - Train large numbers of trainees simultaneously
- Affordable - Accessible for every budget
- Flexible - Easily adaptable to specific training needs
- Quality - Highest level of graphical detail and realism
- Compatible - Standard interface to connect to external equipment
- Ease of use - User-friendly set of instructor tools



GMDSS TRAINER

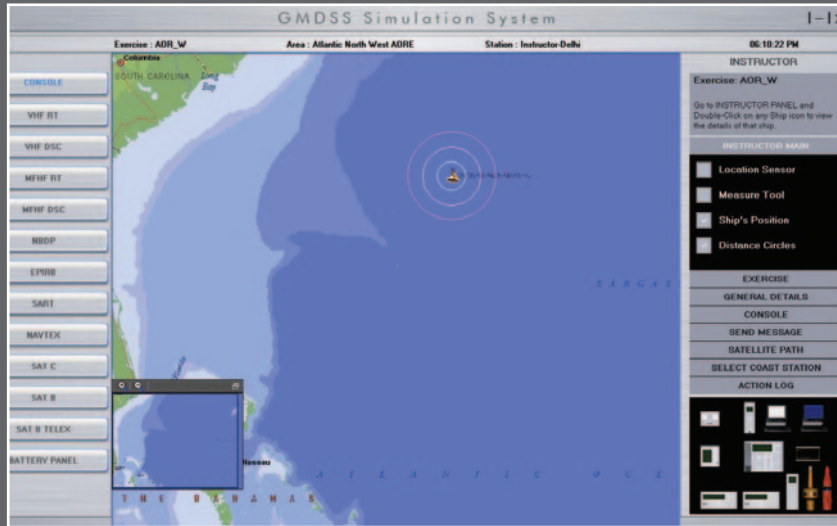
The NAUTIS GMDSS Trainer is a DNV certified simulation system suitable for familiarization and training in accordance with STCW '95 simulator based training requirements. The NAUTIS GMDSS Trainer It is also suitable for carrying out assessments in the operation and use of GMDSS communication equipment leading up to an ROC or GOC Certificate.

The simulator provides the ability to transmit and receive routine, safety and emergency information using GMDSS equipment as per STCW A-IV/2.1 and A-IV/2.2.

FEATURES

- A computer based simulation system designed to be deployed on networked Windows® based computers.
- The system can be installed as either a stand-alone simulator or as a multi-station integrated setup for interactive training.
- All equipment and control operations are simulated using on-screen graphical controls.
- One standardized generic and unified set of simulated equipment models reproduce the capabilities, limitations and potential faults and errors across the GMDSS equipment including atmospheric factors and obstructions that may affect the quality of transmission.
- Realistic time delays are simulated to replicate actual conditions faced during transmission and reception operations.
- Voice communication through VHF and MF/HF provides realistic background noise.
- A simulated text printing facility is provided for equipment such as NAVTEX and NBDP.





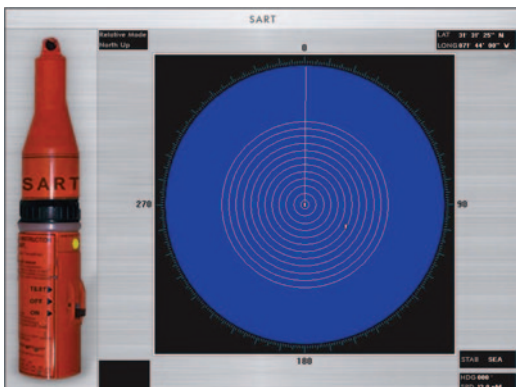
TRAINEE STATION

- Each trainee station provides a GMDSS operating environment closely modelled on those found on-board modern vessels providing the ability to communicate using any of the following equipment:
- VHF – Radio Telephony and Digital Selective Calling
- MF/HF – Radio Telephony, Digital Selective Calling and Narrow Band Direct Printing
- Inmarsat B Ship Earth Station including Telex facility
- Inmarsat C Ship Earth Station including an Enhanced Group Calling Receiver
- NAVTEX Receiver
- EPIRB
- SART

INSTRUCTOR STATION

- Plan and create new exercises in any of the Ocean Regions (IOR, POR, AOR-E, AOR-W)
- Edit existing exercises.
- Load and execute created exercises and monitor one or more trainees.
- Record and replay exercises for subsequent debriefing and analysis.
- Includes a multi role capability and can emulate both mobile and coast stations to affect communications accurately.
- Vessel details can be assigned, including position, name and various IDs (call sign, MMSI number etc.) to each of the trainee workstations.

www.nautissim.com



The NAUTIS GMDSS Trainer can be used as a standalone training product, or in combination with other NAUTIS Maritime Simulation products.