



ECDIS TRAINING SIMULATOR

ABOUT NAUTIS

NAUTIS provides a range of advanced, affordable and effective maritime simulators, fulfilling the training needs of nautical colleges, naval academies, maritime institutes and ship owners.

NAUTIS simulators have been designed on the following principles:

- Efficient - Train large numbers of trainees simultaneously
- Affordable - Accessible for every budget
- Flexible - Easily adaptable to specific training needs
- Quality - Highest level of graphical detail and realism
- Compatible - Standard interface to connect to external equipment
- Ease of use - User-friendly set of instructor tools



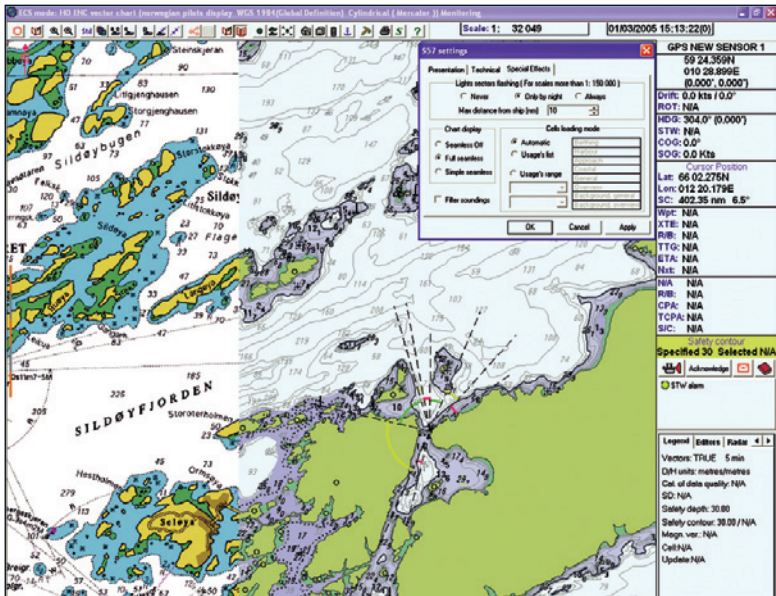
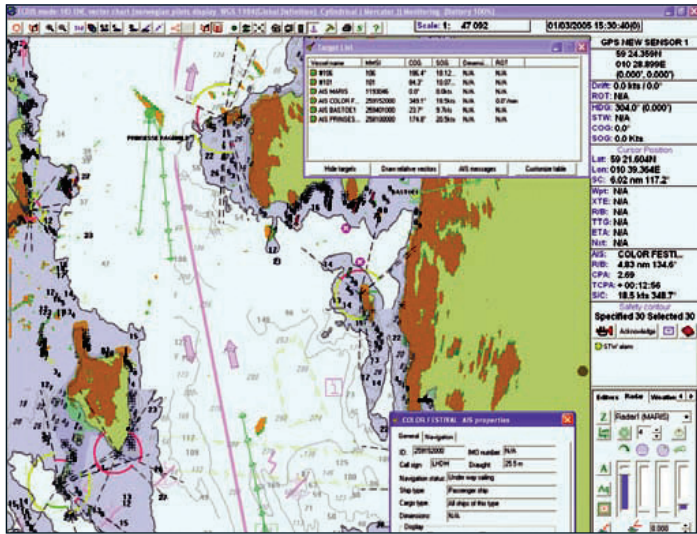
ECDIS TRAINING SIMULATOR

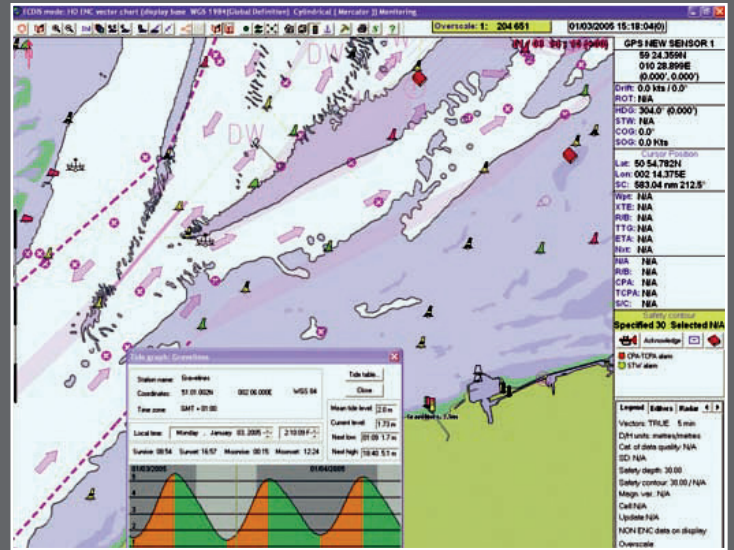
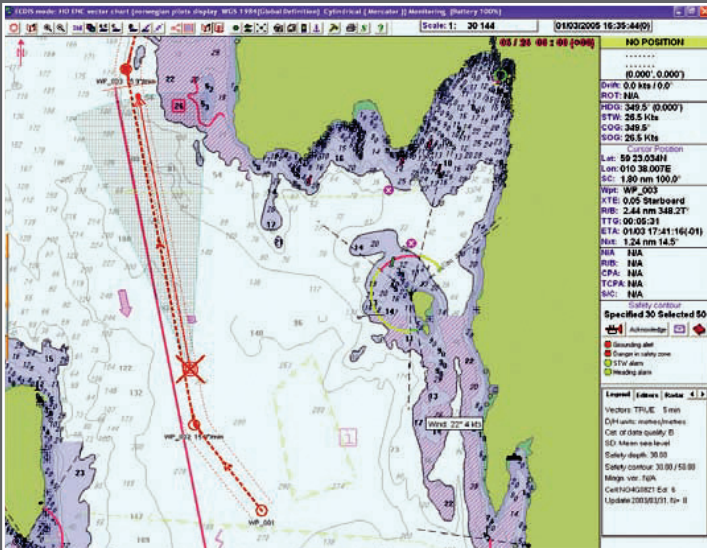
NAUTIS is a new generation of advanced maritime training simulators offering an affordable and effective alternative for training maritime officers and crews. The ECDIS training simulator is part of the NAUTIS family of Maritime solutions, powered by In2Sim technology.

The ECDIS training simulator is a simulation training system suitable for use in familiarization, competence training and assessment in the operation and use of ECDIS equipment in accordance with the STCW'95 standards for simulator based training. The system has been built to comply with the IMO standards for ECDIS equipment to be used on board merchant vessels.

FEATURES

- A computer based simulation system designed to be deployed on networked Windows® based computers.
- The system can be installed as either a standalone simulator or as a multi-station integrated setup for interactive training.
- A standardized and unified interface is simulated to accurately reproduce the capabilities, limitations and possible errors of ECDIS equipment.
- All equipment and functional controls are operated using on-screen graphical controls.
- The trainer can be used for familiarization, operational and SAR training.
- The trainer comes with a built-in resource pack of exercise areas and ship models.





INSTRUCTOR STATION

The instructor station provides a broad range of instructor control features presented in a user friendly graphical environment:

- Plan and create new exercises in any of the exercise areas included in the resource pack
- Edit existing exercises
- Load & execute created exercises and monitor one or more trainees
- Record and replay the exercise subsequent debriefing and analysis

TRAINEE STATION

The trainee station provides a realistic ECDIS operating environment equivalent to an actual ECDIS installation on board a modern vessel and including the following capabilities:

- Route planning
 - Creating and storing a new route
 - Adding, inserting, storing and deleting of waypoints
 - Copying and deleting of routes
 - Renaming routes
- Route monitoring
- Navigation devices
- Obtaining ship's data
- Setting vectors and trails
- marking of safety zones
- Using ARPA data
- The electronic chart can be displayed in 3 different modes: North-up, Head-up and Course-up
- Man-overboard mode
- Search and rescue mode
- Chart display information is available in base, standard and full modes
- Loading, adding, deleting and updating charts

Trainees can also carry out basic manoeuvres using the provided conning control module which allows trainee control of engine, helm and basic auto-pilot with set heading functions

The **ECDIS Training Simulator** can be used as a standalone training product, or in combination with other **NAUTIS Maritime Simulation** products.

www.nautissim.com

