



RADAR/ARPA TRAINER

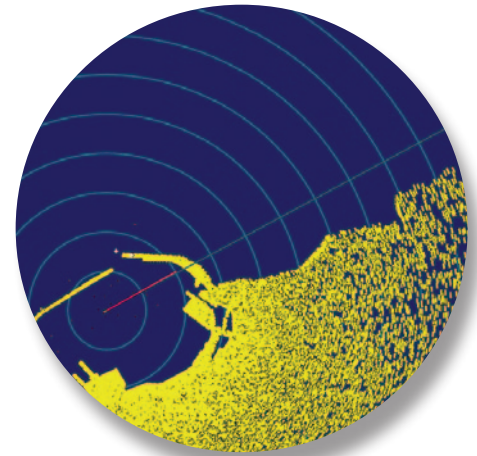
www.nautissim.com

ABOUT NAUTIS

NAUTIS provides a range of advanced, affordable, DNV certified maritime simulators, fulfilling the training needs of nautical colleges, naval academies, maritime institutes and ship owners.

NAUTIS simulators have been designed on the following principles:

- Efficient - Train large numbers of trainees simultaneously
- Affordable - Accessible for every budget
- Flexible - Easily adaptable to specific training needs
- Quality - Highest level of graphical detail and realism
- Compatible - Standard interface to connect to external equipment
- Ease of use - User-friendly set of instructor tools

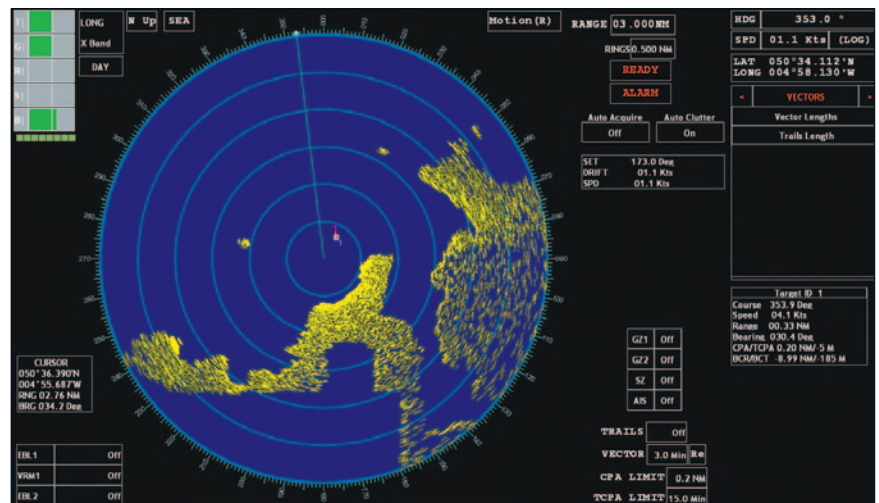


NAUTIS RADAR/ARPA TRAINER

The NAUTIS Radar/ARPA Trainer is built for commercial and military navigational radar training requirements. It complies with the IMO performance standards for Radar and ARPA equipment to be used on board merchant and naval vessels. It is suitable for familiarisation, competence training and assessment in the operation and use of Radar and ARPA equipment in accordance with STCW '95 simulator based training requirements.

FEATURES

- A computer based simulation system designed to be deployed on networked Windows® based computers
- The system can be installed as either a standalone simulator or as a multi-station integrated setup for interactive training
- The simulator uses a standardised and unified interface designed to reproduce the capabilities, limitations and potential faults and errors of Radar/ARPA equipment
- All functional controls are carried out using on-screen graphical controls
- Can be used for familiarisation, operational and SAR training
- Comes with a built in resource pack of exercise areas and ship models



INSTRUCTOR STATION

The powerful and simple to use instructor station of the NAUTIS Radar/ARPA Trainer provides a wealth of capabilities, including:

- Plan and create new exercises in any of the exercise areas provided in the resource pack and edit existing exercises
- Load and run previously created exercises & monitor multiple trainees
- Record the exercise for subsequent debriefing and analysis
- Introduce and dynamically change wind, sea and rain conditions that can affect the Radar system
- Generate SART signals for target vessels in the exercise
- Introduce faults and failures in the Radar/ARPA equipment at any of the trainee workstations including:
 - o Starring and Spoking
 - o EBL and VRM reading errors
 - o HM error
 - o Power failure
 - o ARPA failure

Powered by



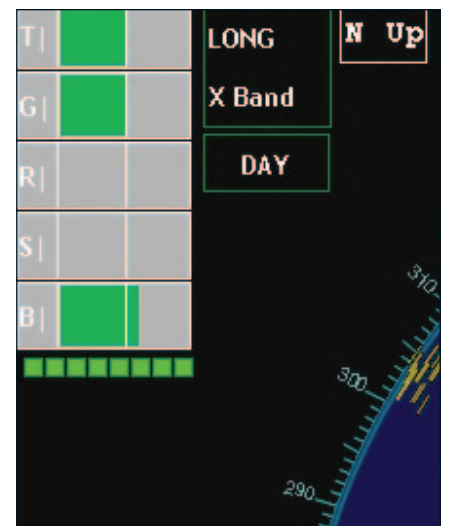


www.nautissim.com

TRAINEE STATION

Each trainee station provides a Radar/ARPA operating environment similar to one found on-board a modern vessel and providing the following features and capabilities:

- Built in X-band & S-band characteristics and display ability on the fly
- N-up, C-up and H-up displays
- Sea-Stabilised and Ground Stabilised mode
- True motion and relative motion displays
- Ranges supported from 0.25NM to 48NM along with the appropriate Range Rings
- Auto selected pulse length based on Range Scale selection
- Controls for Gain, Brilliance including Day/Night mode, Anti-Clutter (Sea & Rain) and Tuning
- Ability to carry out performance monitoring
- 2 sets of VRM/EBL are available
- Display support for RACON, RAMARK and SART signal
- Parallel indexing can be carried out
- Audio and visual alarms are available (alarms may require additional speakers depending on PC configuration)
- True/ relative vectors
- ARPA functions including:
 - o Manual and auto acquisition
 - o Can simultaneously track up to 50 targets
 - o Guard zones, safety zones with relevant alarms and auto acquisition
 - o Facility to carry out trial manoeuvres
- Each trainee can carry out basic manoeuvres using the provided conning control module software – providing the ability to operate the engine, helm and basic auto-pilot with set heading functions



The NAUTIS Radar/ARPA Trainer can be used as a standalone training product, or in combination with other NAUTIS Maritime Simulation products.